

MspI RFLP of FSHB on chromosome 11p

S.C.Healey¹, M.Southall¹, N.G.Martin¹ and G.Chenevix-Trench*

Joint Oncology Program, Queensland Institute of Medical Research and Department of Pathology, University of Queensland, Herston, Qld 4006 and ¹Queensland Institute of Medical Research, 300 Herston Road, Herston, Qld 4029, Australia

Source and Description of Clone: pFSHB-1.1 is a 1.1 kb single-copy EcoRI-SacI human genomic DNA fragment in phage λ .

Polymorphism: MspI identifies two alleles.

Allele B1 - 10.65 kb

Allele B2 - 1.85 kb

Frequencies: In 34 unrelated Caucasian individuals:

Allele B1 (10.65 kb): 0.53

Allele B2 (1.85 kb): 0.47

17/27 (63%) individuals were heterozygous.

Not Polymorphic For: PstI, TaqI, EcoRI, SstI, BamHI, BglII, PvuII, MboI and EcoRV in 9 unrelated Caucasians.

Chromosomal Localisation: FSHB gene has been mapped to human chromosome region 11p11.2-11p13 (2).

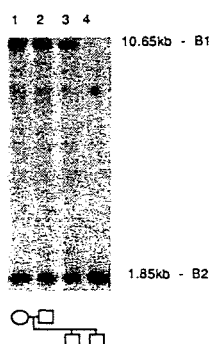
Mendelian Inheritance: Mendelian inheritance was demonstrated in six two-generation families (16 meioses scored).

Probe Availability: Contact P.C. Watkins at Integrated Genetics Inc., Framingham.

Other Comments: A HindIII RFLP has previously been detected with this probe (1). In 13 individuals in whom haplotypes could be unequivocally scored, there were 14 HindIII-1/MspI-1, 7 HindIII-2/MspI-2 and 5 HindIII-1/MspI-2 haplotypes. The two RFLPs are thus in strong ($P = 0.0012$) but not perfect disequilibrium.

Acknowledgements: This work was supported by the National Health and Medical Research Council of Australia.

References: 1) Watkins, P.C. *et al.* (1987) *DNA* 6, 205-212. 2) *HGM* 11.



* To whom correspondence should be addressed